



# ELEVATE YOUR LIFE & HOME

CAMBRIDGE  
ELEVATING

North America's Premier  
Manufacturer Of  
Residential Elevators.

# LIVE IN COMFORT

**Enjoy your home, your neighbourhood and your way of life, long into retirement.**

Whether you're looking to access all levels of your home with ease, or just want to add the appeal of a home elevator, Cambridge Elevating has several models and features to suit your needs.

There is no supplier that can match the overall value offered by our portfolio, pricing, or customer experience. **Guaranteed.**



## ELEVATED QUALITY

### All Elevators Feature

#### Hydraulic Drive

- ▶ Smooth, reliable and whisper quiet 1:2 hydraulic drive
- ▶ Power unit factory tested for pressure, amp draw and vibration to ensure top performance
- ▶ Hydraulic home elevators contain less materials and have a lower overall environmental impact than traction lifts.\*

#### Commercial Grade Structural System

- ▶ Commercial-grade rail system and elevator car frame
- ▶ Car frame uses cushioned roller wheels to provide a superior quiet, and comfortable ride

#### Craftsmanship

- ▶ Handcrafted elevator cab is made to fit your home design
- ▶ Low-voltage LED downlighting in choice of warm or cool

#### Standard Features

- ▶ 950-1500 lbs. capacity
- ▶ Serves up to 6 stops and maximum travel of 50 ft.
- ▶ Up to 40fpm
- ▶ Stainless steel car operating panel with position indicator and built in telephone
- ▶ Auto cycling (when idle for 48 hrs)
- ▶ Auto homing (park elevator at desired floor)
- ▶ Moving mode (Cambrian model only)
- ▶ Call station security
- ▶ Audible arrival notification
- ▶ 36-month limited warranty
- ▶ Remote Monitoring – see Pg. 7 to learn more

#### Safety

- ▶ Infrared light curtains at each car entrance
- ▶ UL listed safety interlock at each landing entrance
- ▶ Manual lowering device on power unit
- ▶ Battery back-up for emergency lowering, lighting and door unlocking
- ▶ Meets all ASME A17.1 national codes for elevator safety

\* A study, by the Spanish ITAINNOVA, the Technological Institute of Aragon.

# SELECT YOUR MODEL

The Design Of The Door System Is The Defining Characteristic Of Each Model

## THE ELMIRA

Manual (or automatic) accordion cab gate with swing landing door.



## THE HERITAGE

Automatic commercial-style sliding cab door panels with swing landing door.



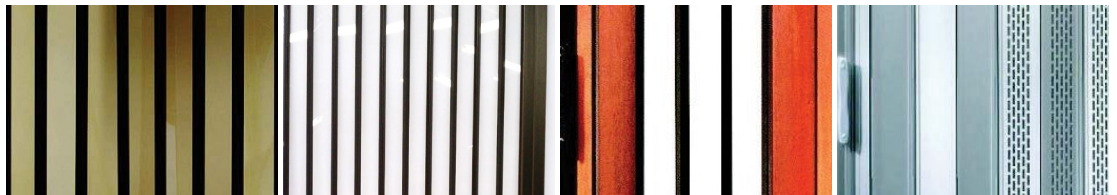
## THE CAMBRIAN

Automatic commercial-style sliding door panels on both cab and landings.



## DOORS AND ENTRANCES

### ACCORDION CAB GATE (ELMIRA MODEL)



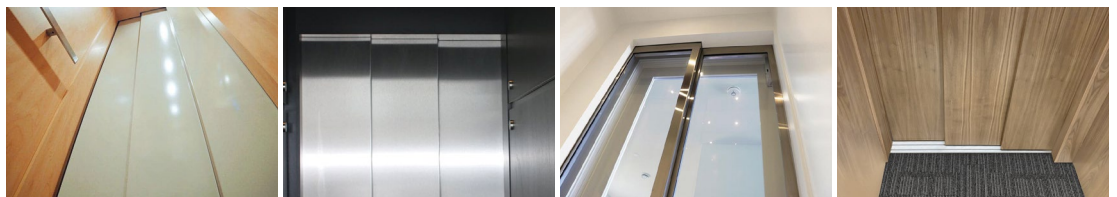
SOLID VINYL  
(STANDARD)

VISIFOLD CLEAR OR  
BRONZE

HYBRID

ALUMINUM SOLID OR  
PERFORATED

### AUTOMATIC SLIDING CAB DOOR PANELS (HERITAGE & CAMBRIAN MODELS)



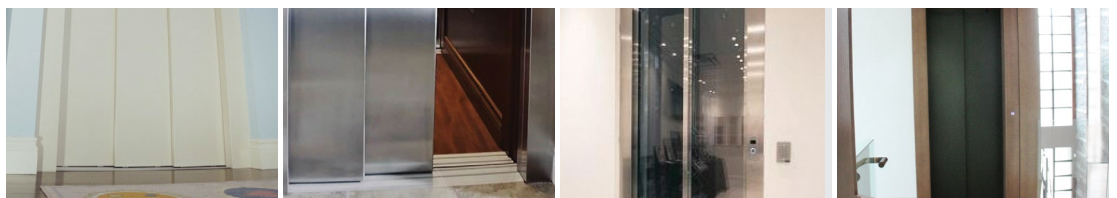
BEIGE EPOXY  
(STANDARD)

STAINLESS STEEL

GLASS

UNFINISHED WOOD  
VENEER

### AUTOMATIC SLIDING LANDING ENTRANCES (CAMBRIAN MODEL)



BEIGE EPOXY  
(STANDARD)

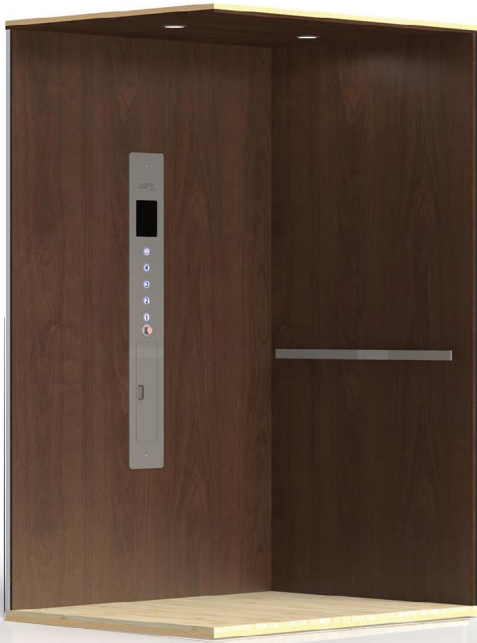
STAINLESS STEEL

GLASS

FRAMELESS (FINISHED BY  
CONTRACTOR)

# SELECT YOUR INTERIOR

Customized To Your Style - Interiors Available For All Models



## LAMINATE

MELAMINE: WALNUT, KODIAK, GIBRALTAR, PALOMINO, MAPLE, ALABASTER (STANDARD)

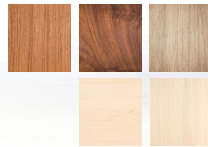


P-LAM: WHITE, GREY



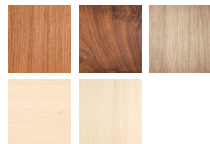
## UNFINISHED VENEER

CHERRY, WALNUT, OAK, MAPLE, BIRCH (STANDARD)



## RECESSED 4-PANEL UNFINISHED VENEER

CHERRY, WALNUT, OAK, MAPLE, BIRCH



## STAINLESS STEEL NO. 4 BRUSHED ONLY





**FLAT MDF\***  
(STANDARD)



**RAISED  
ACCENT STRIPE\***  
STRIPE ON COP WALL  
& CEILING ONLY  
USING ANY COMBO OF  
STANDARD MATERIAL



**RECESSED  
SINGLE PANEL  
SHAKER MDF\***



**RAISED  
4-PANEL  
MDF\***

**\*MDF (MEDIUM DENSITY FIBREBOARD) IS MANUFACTURED AND SHIPPED UNFINISHED. TO BE PAINTED BY OTHERS**

Rendering are artist's concept of the completed elevator and is subject to change.  
Flooring shown does not represent final product. E. & O. E.

# FIXTURES, OPTIONS & OTHER FEATURES

## CALL STATIONS



CALL STATION  
(STANDARD)



DIGITAL  
POSITION  
INDICATOR

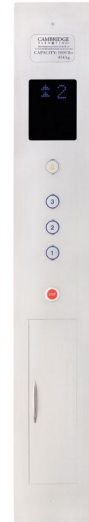


HANDS-FREE  
"WAVE"



NUMERIC  
KEYPAD

## CAR OPERATING PANELS



(STANDARD)



PHONE  
SEPARATE

## LIGHTING



LOW VOLTAGE LED  
(STANDARD)



6 PIN SPOTLIGHT  
LOW VOLTAGE LED

## HAND RAILS



1.5" FLAT  
(STANDARD)



3" FLAT



2" CYLINDER



1.5" FLAT WITH  
CURVED ENDS

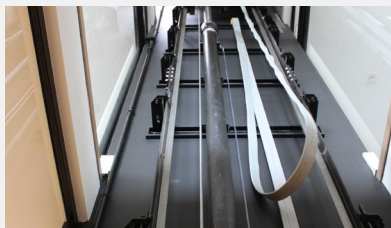


3" FLAT WITH  
CURVED ENDS

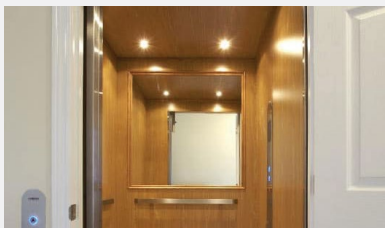


2" CYLINDER  
WITH CURVED  
ENDS

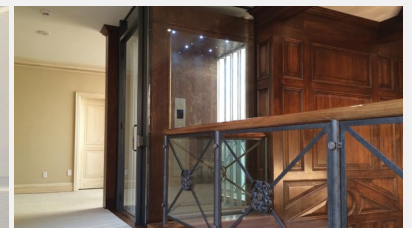
## ADDITIONAL OPTIONS



CUSTOM PAINTED MECHANICAL



CAB MIRRORS



CAB WINDOWS

## OTHER FEATURES

**Customize Your Elevator  
With These Final Touches**

### MACHINE ROOM-LESS HYDRAULIC POWER UNIT

Space saving design with the same smooth and quiet ride

### CAB HEIGHT

84", 96" Or Custom

### CAB DOOR HEIGHT

78-3/4", 84", 96"

### ACCESSORY OPTIONS

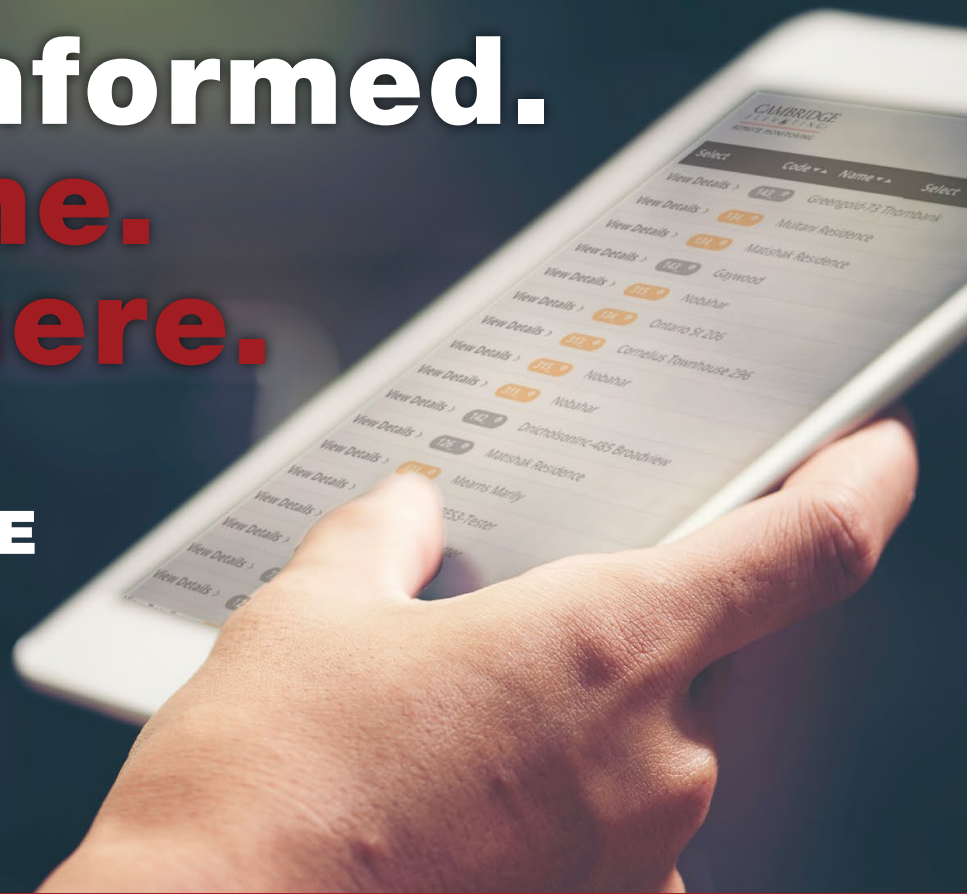
Sabbath Mode (Auto Cycles Through Floors)

2-Stop Auto Cycling (Car Returns)

Door Baffles

# Stay Informed. Anytime. Anywhere.

## WITH REMOTE MONITORING



Reduce Elevator Downtime  
And Save Money By Up To **60%!\***

### Our innovative Residential Elevator Remote Monitoring System is the next step in **smart home elevator technology.**

Gain the peace of mind in knowing the key systems within your elevator are professionally monitored. Remote Monitoring technology will instantly notify your home elevator service provider when preventative maintenance is required. In the event of an unexpected system alert, the notification will detail the specific alert code and offer a list of diagnostic actions and options to resolve the episode.

#### Automated Diagnostics

- ▶ Real-time health status updates
- ▶ Experience proactive customer service
- ▶ Avoid unnecessary service or repair appointments
- ▶ Elevator system alerts can be solved over the phone
- ▶ Sends preventative maintenance alerts



\*Results may vary based on dealer travel distance and hourly rates.

**FIND AN EXPERT  
RIGHT ACROSS  
NORTH AMERICA.**



**SMART ELEVATORS  
FOR TODAY'S  
SMART HOMES.**

22726 Aspen St, Suite 202-131  
Lake Forest, CA 92630

 **LEARN MORE ONLINE**  
[gq-elevators.com](http://gq-elevators.com)

 **GET AN INSTANT MSRP**  
[info@gq-elevators.com](mailto:info@gq-elevators.com)

**CAMBRIDGE**  
ELEVATING

**North America's Premier  
Manufacturer Of  
Residential Elevators.**